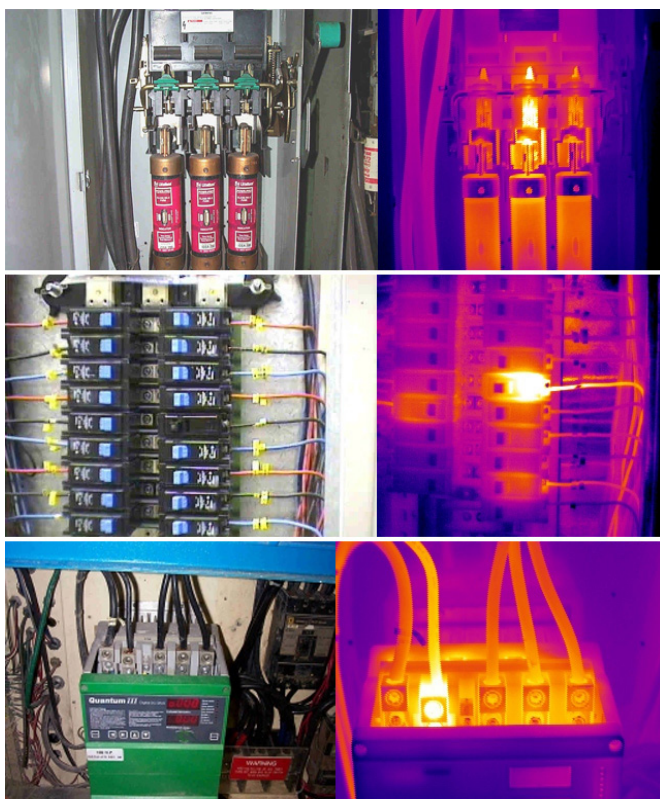


# INFRARED INSPECTION

Infrared (IR) inspections are a building diagnostic service that use thermal imaging to locate hot spots caused by defects in connections and components.



At Windemuller, our team of licensed electricians is pleased to offer thermal imaging of electrical connections and equipment. Using state-of-the-art equipment, our seasoned staff works quickly and effectively, prioritizing issues and offering solutions to any problems found along the way. Annual IR inspections are a valuable addition to your routine maintenance plan, providing early detection of problems before they result in equipment damage, business interruption, emergency maintenance costs and physical harm to your employees.



## BENEFITS

Annual IR inspections provide customers with a lot of benefits, especially when included in their routine maintenance plan:

- Quickly pinpoint electrical system problems
- Reduces unscheduled down time
- Increases equipment life
- Prevents costly system failures
- No service interruptions during inspection
- Improves safety for employees by lowering risk
- Lower repair costs

Conditions detectable by an infrared inspection:

- Loose / deteriorated connections
- Overloads
- Open circuits
- Unbalanced loads
- Inductive heating
- Defective equipment