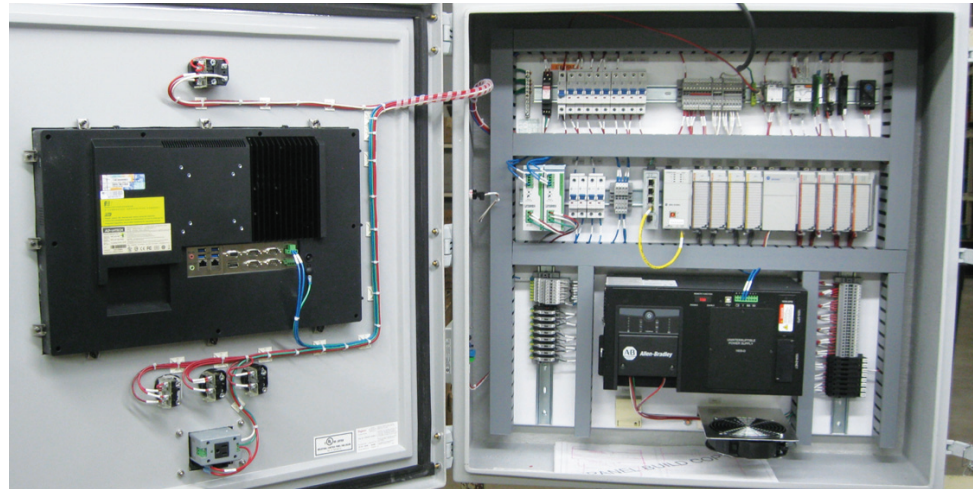


A programmable logic controller (PLC) is an industrial solid-state computer that monitors inputs and outputs, and makes logic-based decisions for automated processes or machines.



With PLC programming, Windemuller delivers on one of the most challenging aspects of the manufacturing industry with nuanced attention to detail, development, and design.

Windemuller is able to take a set of P&ID drawings, as well as an operations narrative, and quickly develop a functioning control system. We program most brands of PLCs in the process industries. Windemuller also has experience with various communication protocols ranging from Serial, Modbus and Ethernet/IP to Profibus, Device Net and many more. We assure complete product safety, adaptability and functionality.

## EQUIPMENT & CAPABILITIES

- Various PLC Hardware with Allen Bradley and Opto22 a specialty
- Custom Wonderware and Rockwell Automation RSVIEW SCADA systems
- Custom .Net interfaces
- Integration with custom systems
- Historian and Alarming packages including customized packages
- Development of loop diagrams and installation drawings
- Commissioning, startup, and loop tuning services
- Virtualized server implementation

