

WHAT IS THE VALUE OF PREFABRICATION?

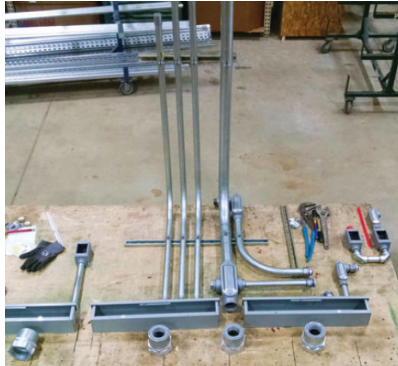
Prefab maximize quality, continuity and reduce completion times by pre-planning, detailing projects and implementing best practices from the start. Contractors see increased profit margins and decreased expenses for customers. By supplying the electrical team with systems prior to installation, prefab can increase project efficiency and eliminate waiting on materials, so even the most fast-tracked projects can be completed on schedule.

WHY USE WINDEMULLER?

In a competitive market, Windemuller stays ahead of the game in prefab by seeking out new methods and opportunities to increase quality and ensure efficiency on job sites during installation. We take time to evaluate the scope of work beforehand and from there determine the most effective way to build the project. In order to provide the most competitive price and savings to our customers, prefabrication is often used to help reduce labor cost and keep projects on schedule, if not ahead.

Windemuller also uses BIM (Building Information Modeling) software to improve our prefab strategy. This software enhances building layout capabilities and helps avoid job site conflicts that would reduce productivity. The information BIM provides enables us to prefab all the necessary electrical components for the project.

Windemuller believes in putting the customer first and will go to great lengths to ensure they get quality service at a fair price.



FREQUENTLY ASKED QUESTIONS

Q: Why should I use prefabrication?

A: There are many benefits of using prefab:

- Worker Safety
- Time Savings / Schedule Advantages
- Labor and Material Savings
- Controlled Environment for increased Quality Control
- Increased Field Productivity

Q: What electrical elements can you prefabricate?

A: We prefab outlet boxes, conduit bends for both power and low-voltage applications, temporary power units, larger precut cables and wires, and precut Unistrut racks for conduit runs.